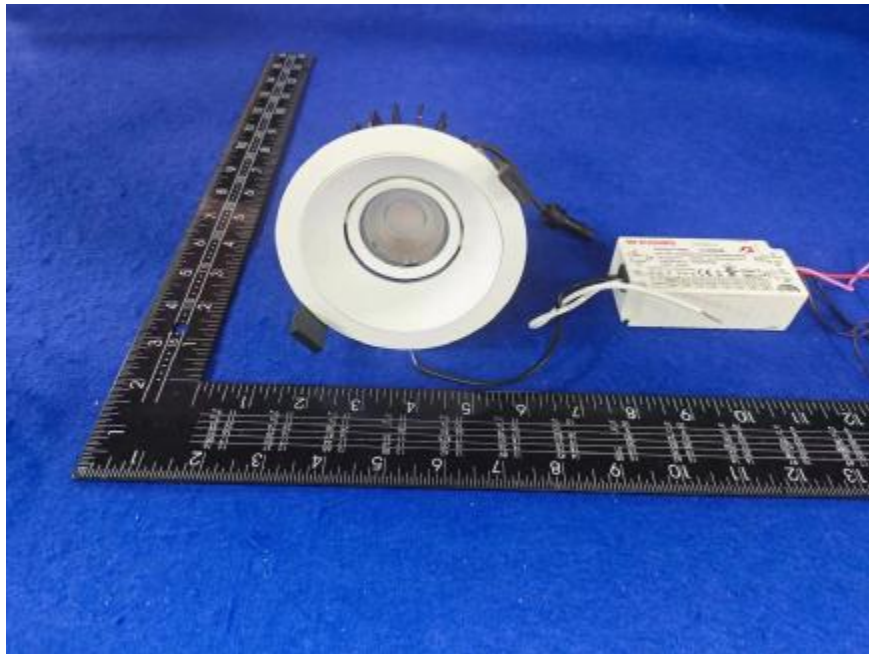


Luminaire Photograph



Light Output Ratio:	81.0%	
Luminaire Power:	17.37 W	
SHR Nominal:	0.00	Calculated using the TM5
SHR Maximum:	0.30	fine grid method.

C Range: 0 - 360DEG
C Interval: 30.0DEG
Test Speed: HIGH
Temperature: 25.3 °C
Operators: zoe
Test Date: 2023-7-12

Range: 0 - 180DEG
Interval: 1.0DEG
Test System: EVERFINE GO-SPEX500_V1 SYSTEM V2.00.461
Humidity: 65.0%
Test Distance: 3.160m [K=1.0000]
Remarks: LAMP: BXR-V-DR-1830G-1000-K-23 Ra: 90
LENS: PM-1096 15R
DRIVER: PUP20A-1WMC 450mA
30minutes warm-up

LUMINOUS INTENSITY DISTRIBUTION DIAGRAM

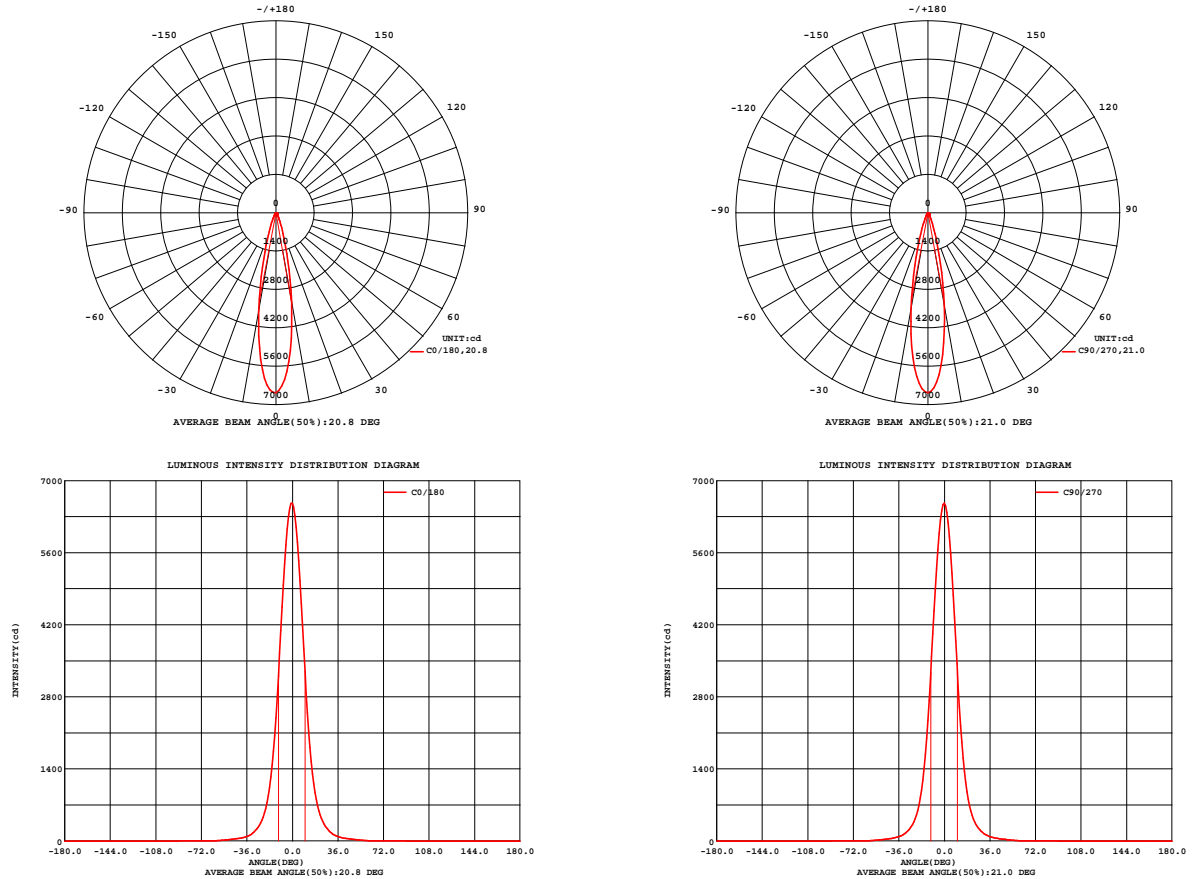


Fig. C0/C180

Fig. C90/C270

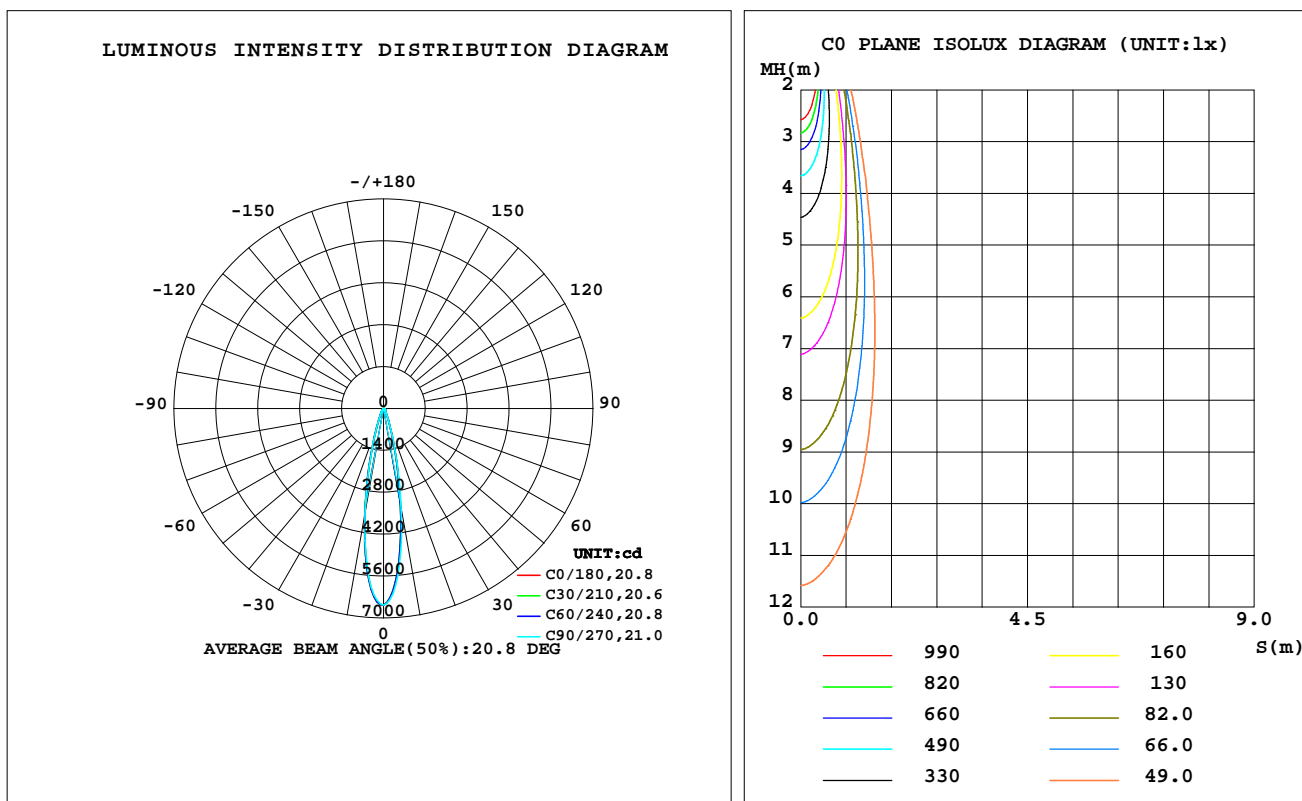
C Range: 0 - 360DEG
C Interval: 30.0DEG
Test Speed: HIGH
Temperature: 25.3 °C
Operators: zoe
Test Date: 2023-7-12

Range: 0 - 180DEG
Interval: 1.0DEG
Test System: EVERFINE GO-SPEX500_V1 SYSTEM V2.00.461
Humidity: 65.0%
Test Distance: 3.160m [K=1.0000]
Remarks: LAMP: BXR-V-DR-1830G-1000-K-23 Ra: 90
LENS: PM-1096 15R
DRIVER: PUP20A-1WMC 450mA
30minutes warm-up

LUMINAIRE PHOTOMETRIC TEST REPORT

Test:U:120.06V I:0.1455A P:17.367W PF:0.9932 Freq:59.98Hz Lamp Flux:1493.63x1 lm		
NAME: 2118.192-LEA-15-DW	TYPE:	WEIGHT:
SPEC.: 3000K	DIM.:	SERIAL No.: 2307120891
MFR.: RISE	SUR.: 0.0063585m2	Shielding Angle:

DATA OF LAMP		PHOTOMETRIC DATA				Eff: 69.64 lm/W
MODEL	Bridgelux	Imax(cd)	6564	S/MH(C0/180)	0.37	
NOMINAL POWER(W)	17	LOR(%)	81.0	S/MH(C90/270)	0.37	
RATED VOLTAGE(V)	120	TOTAL FLUX(lm)	1209.5	UP,DN(C0-180)	0.0,39.9	
NOMINAL FLUX(lm)	1493.63	CIE CLASS	DIRECT	UP,DN(C180-360)	0.0,41.1	
LAMPS INSIDE	1	up(%)	0.0	CIBSE SHR NOM	0.00	
TEST VOLTAGE(V)	120	down(%)	81.0	CIBSE SHR MAX	0.30	



C Range: 0 - 360DEG
C Interval: 30.0DEG
Test Speed: HIGH
Temperature:25.3℃
Operators:zoe
Test Date:2023-7-12

Range: 0 - 180DEG
Interval: 1.0DEG
Test System:EVERFINE GO-SPEX500_V1 SYSTEM V2.00.461
Humidity:65.0%
Test Distance:3.160m [K=1.0000]
Remarks: LAMP:BXRV-DR-1830G-1000-K-23 Ra:90
LENS: PM-1096 15R
DRIVER: PUP20A-1WMC 450mA
30minutes warm-up

ZONAL FLUX DIAGRAM

ZONAL FLUX DIAGRAM:

	C0	C45	C90	C135	C180	C225	C270	C315		zone	total	%lum,lamp
10	3296	3268	3441	3611	3642	3606	3580	3462	0- 10	464.9	464.9	38.4,31.1
20	683.0	643.0	680.3	752.3	742.7	700.7	693.9	715.0	10- 20	469.6	934.5	77.3,62.6
30	173.3	163.0	168.4	180.1	179.0	168.6	167.5	175.3	20- 30	162.3	1097	90.7,73.4
40	60.79	58.71	59.22	61.29	61.07	59.70	59.07	60.69	30- 40	63.41	1160	95.9,77.7
50	27.53	26.26	24.86	26.84	26.87	25.80	24.83	26.84	40- 50	31.64	1192	98.5,79.8
60	6.087	5.357	4.469	5.668	6.177	5.360	4.364	5.407	50- 60	13.33	1205	99.7,80.7
70	1.620	1.498	1.381	1.539	1.640	1.498	1.381	1.470	60- 70	2.879	1208	99.9,80.9
80	0.7086	0.5629	0.4816	0.5928	0.7457	0.5777	0.4927	0.5604	70- 80	1.096	1209	100,81
90	0	0	0	0	0	0	0	0	80- 90	0.2363	1209	100,81
100	0	0	0	0	0	0	0	0	90-100	0	1209	100,81
110	0	0	0	0	0	0	0	0	100-110	0	1209	100,81
120	0	0	0	0	0	0	0	0	110-120	0	1209	100,81
130	0	0	0	0	0	0	0	0	120-130	0	1209	100,81
140	0	0	0	0	0	0	0	0	130-140	0	1209	100,81
150	0	0	0	0	0	0	0	0	140-150	0	1209	100,81
160	0	0	0	0	0	0	0	0	150-160	0	1209	100,81
170	0	0	0	0	0	0	0	0	160-170	0	1209	100,81
180	0	0	0	0	0	0	0	0	170-180	0	1209	100,81
DEG	LUMINOUS INTENSITY:cd									UNIT:lm		

C Range: 0 - 360DEG
C Interval: 30.0DEG
Test Speed: HIGH
Temperature:25.3℃
Operators:zoe
Test Date:2023-7-12

Range: 0 - 180DEG
Interval: 1.0DEG
Test System:EVERFINE GO-SPEX500_V1 SYSTEM V2.00.461
Humidity:65.0%
Test Distance:3.160m [K=1.0000]
Remarks: LAMP:BXRV-DR-1830G-1000-K-23 Ra:90
LENS: PM-1096 15R
DRIVER: PUP20A-1WMC 450mA
30minutes warm-up

LUMINANCE LIMITATION CURVES

Test:U:120.06V I:0.1455A P:17.367W PF:0.9932 Freq:59.98Hz
Lamp Flux:1493.63x1 lm

NAME: 2118.192-LEA-15-DW

TYPE:

WEIGHT:

SPEC.: 3000K

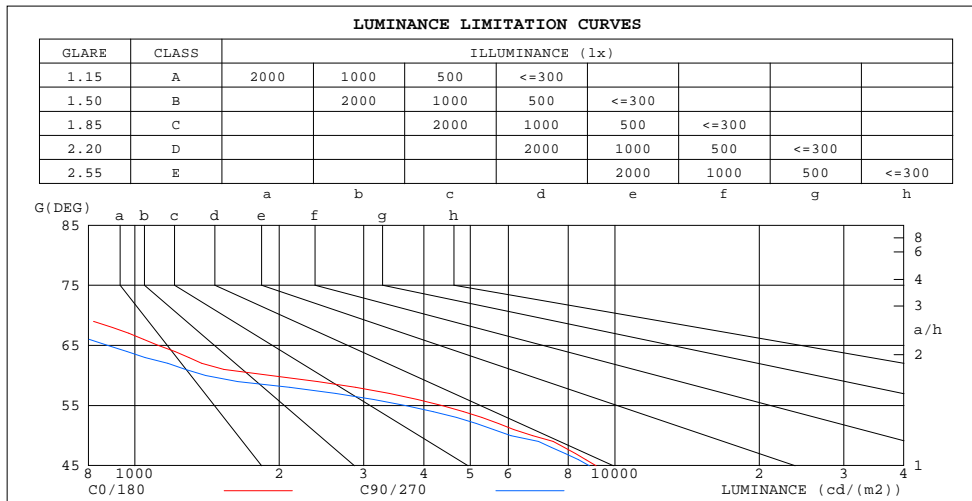
DIM.:

SERIAL No.: 2307120891

MFR.: RISE

SUR.: 0.0063585m2

Shielding Angle:



LUMINANCE cd/(m2)		
G(180)	C0/180	C90/270
85	483	213
80	643	436
75	713	568
70	746	634
65	1118	877
60	1918	1404
55	4369	3665
50	6747	6075
45	9143	8853

C Range: 0 - 360DEG
C Interval: 30.0DEG
Test Speed: HIGH
Temperature:25.3℃
Operators:zoe
Test Date:2023-7-12

Range: 0 - 180DEG
Interval: 1.0DEG
Test System:EVERFINE GO-SPEX500_V1 SYSTEM V2.00.461
Humidity:65.0%
Test Distance:3.160m [K=1.0000]
Remarks: LAMP:BXRV-DR-1830G-1000-K-23 Ra:90
LENS: PM-1096 15R
DRIVER: PUP20A-1WMC 450mA
30minutes warm-up

CU AND LUMINAIRE BUDGETARY ESTIMATE DIAGRAM

Test:U:120.06V I:0.1455A P:17.367W PF:0.9932 Freq:59.98Hz
Lamp Flux:1493.63x1 lm

NAME: 2118.192-LEA-15-DW

TYPE:

WEIGHT:

SPEC.: 3000K

DIM.:

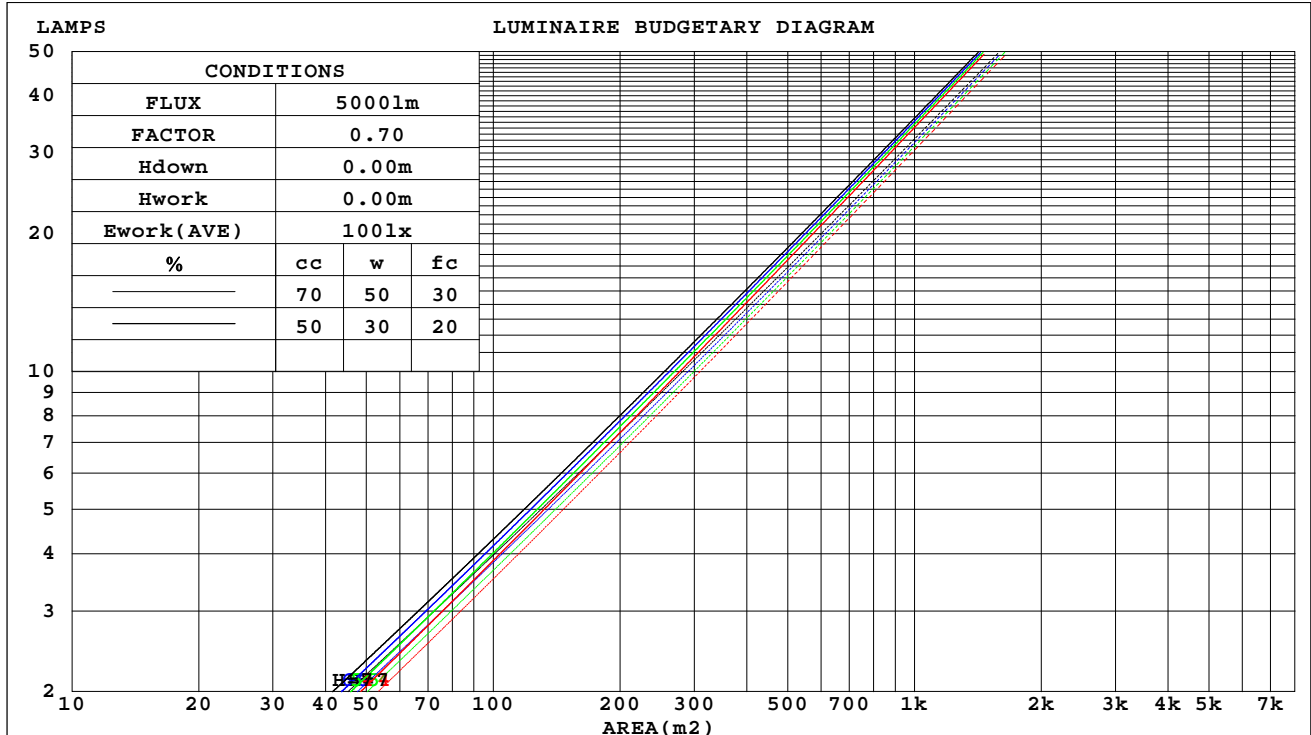
SERIAL No.: 2307120891

MFR.: RISE

SUR.: 0.0063585m2

Shielding Angle:

cc	80%			70%			50%			30%			10%			0
w	50%	30%	10%	50%	30%	10%	50%	30%	10%	50%	30%	10%	50%	30%	10%	0
fc	20%			20%			20%			20%			20%			0
RCR	RCR:Room Cavity Ratio															



C Range: 0 - 360DEG
C Interval: 30.0DEG
Test Speed: HIGH
Temperature:25.3℃
Operators:zoe
Test Date:2023-7-12

Range: 0 - 180DEG
Interval: 1.0DEG
Test System:EVERFINE GO-SPEX500_V1 SYSTEM V2.00.461
Humidity:65.0%
Test Distance:3.160m [K=1.0000]
Remarks: LAMP:BXRV-DR-1830G-1000-K-23 Ra:90
LENS: PM-1096 15R
DRIVER: PUP20A-1WMC 450mA
30minutes warm-up

WEC AND CCEC

Test:U:120.06V I:0.1455A P:17.367W PF:0.9932 Freq:59.98Hz Lamp Flux:1493.63x1 lm		
NAME: 2118.192-LEA-15-DW	TYPE:	WEIGHT:
SPEC.: 3000K	DIM.:	SERIAL No.: 2307120891
MFR.: RISE	SUR.: 0.0063585m2	Shielding Angle:

cc	80%			70%			50%			30%			10%			0	
w	50%	30%	10%	50%	30%	10%	50%	30%	10%	50%	30%	10%	50%	30%	10%	0	
fc	20%			20%			20%			20%			20%			0	
RCR	RCR:Room Cavity Ratio						Wall Exitance Coefficients(WEC)										
0.0																	
1.0	.113	.064	.020	.108	.062	.020	.098	.056	.018	.089	.051	.016	.080	.046	.015		
2.0	.105	.058	.018	.101	.056	.017	.093	.052	.016	.085	.048	.015	.078	.044	.014		
3.0	.098	.052	.016	.095	.051	.015	.088	.048	.014	.081	.045	.014	.075	.042	.013		
4.0	.092	.048	.014	.089	.047	.014	.083	.044	.013	.078	.042	.013	.073	.040	.012		
5.0	.087	.044	.013	.084	.043	.013	.079	.041	.012	.075	.039	.012	.070	.038	.011		
6.0	.082	.041	.012	.080	.040	.012	.075	.039	.011	.071	.037	.011	.068	.036	.011		
7.0	.078	.038	.011	.076	.038	.011	.072	.036	.010	.069	.035	.010	.065	.034	.010		
8.0	.074	.036	.010	.072	.036	.010	.069	.034	.010	.066	.033	.010	.063	.032	.009		
9.0	.071	.034	.010	.069	.034	.009	.066	.033	.009	.063	.032	.009	.061	.031	.009		
10.0	.067	.032	.009	.066	.032	.009	.064	.031	.009	.061	.030	.009	.059	.030	.008		

cc	80%			70%			50%			30%			10%			0
w	50%	30%	10%	50%	30%	10%	50%	30%	10%	50%	30%	10%	50%	30%	10%	0
fc	20%			20%			20%			20%			20%			0
RCR	RCR:Room Cavity Ratio			Ceiling Cavity Exitance Coefficients(CCEC)												
0.0	.154	.154	.154	.132	.132	.132	.090	.090	.090	.052	.052	.052	.017	.017	.017	
1.0	.136	.128	.120	.117	.110	.103	.080	.075	.071	.046	.044	.041	.015	.014	.013	
2.0	.122	.107	.095	.105	.092	.082	.072	.064	.057	.041	.037	.034	.013	.012	.011	
3.0	.110	.092	.077	.094	.079	.067	.065	.055	.047	.037	.032	.028	.012	.010	.009	
4.0	.100	.079	.064	.086	.069	.055	.059	.048	.039	.034	.028	.023	.011	.009	.008	
5.0	.092	.069	.053	.079	.060	.046	.054	.042	.033	.031	.025	.019	.010	.008	.006	
6.0	.084	.061	.045	.073	.053	.039	.050	.037	.028	.029	.022	.016	.009	.007	.005	
7.0	.078	.055	.038	.067	.047	.033	.046	.033	.024	.027	.020	.014	.009	.006	.005	
8.0	.073	.049	.033	.063	.043	.029	.043	.030	.020	.025	.018	.012	.008	.006	.004	
9.0	.068	.045	.029	.059	.039	.025	.041	.027	.018	.024	.016	.011	.008	.005	.004	
10.0	.064	.041	.025	.055	.035	.022	.038	.025	.016	.022	.015	.009	.007	.005	.003	

C Range: 0 - 360DEG
C Interval: 30.0DEG
Test Speed: HIGH
Temperature:25.3℃
Operators:zoe
Test Date:2023-7-12

Range: 0 - 180DEG
Interval: 1.0DEG
Test System:EVERFINE GO-SPEX500_V1 SYSTEM V2.00.461
Humidity:65.0%
Test Distance:3.160m [K=1.0000]
Remarks: LAMP:BXRV-DR-1830G-1000-K-23 Ra:90
LENS: PM-1096 15R
DRIVER: PUP20A-1WMC 450mA
30minutes warm-up

UGR(Unified Glare Rating) Table

Test:U:120.06V I:0.1455A P:17.367W PF:0.9932 Freq:59.98Hz Lamp Flux:1493.63x1 lm										
NAME: 2118.192-LEA-15-DW					TYPE:			WEIGHT:		
SPEC.: 3000K					DIM.:			SERIAL No.: 2307120891		
MFR.: RISE					SUR.: 0.0063585m2			Shielding Angle:		
ceiling/cavity	0.7	0.7	0.5	0.5	0.3	0.7	0.7	0.5	0.5	0.3
walls	0.5	0.3	0.5	0.3	0.3	0.5	0.3	0.5	0.3	0.3
working plane	0.2	0.2	0.2	0.2	0.2	0.2	0.2	0.2	0.2	0.2
Room dimensions	Viewed crosswise					Viewed endwise				
x = 2H y = 2H	9.9	10.6	10.1	10.7	10.9	9.6	10.3	9.8	10.4	10.6
3H	9.8	10.5	10.1	10.6	10.8	9.5	10.1	9.7	10.3	10.5
4H	9.8	10.4	10.0	10.6	10.8	9.4	10.0	9.7	10.2	10.4
6H	9.7	10.3	10.0	10.5	10.7	9.4	9.9	9.6	10.2	10.4
8H	9.7	10.2	10.0	10.5	10.7	9.3	9.9	9.6	10.1	10.4
12H	9.6	10.2	9.9	10.4	10.7	9.3	9.8	9.6	10.1	10.3
4H 2H	9.8	10.4	10.0	10.6	10.8	9.5	10.1	9.7	10.3	10.5
3H	9.7	10.2	10.0	10.5	10.7	9.4	9.9	9.7	10.1	10.4
4H	9.6	10.1	10.0	10.4	10.7	9.3	9.8	9.6	10.1	10.4
6H	9.6	10.0	9.9	10.3	10.7	9.2	9.6	9.6	10.0	10.3
8H	9.5	9.9	9.9	10.3	10.6	9.2	9.6	9.6	9.9	10.3
12H	9.5	9.8	9.9	10.2	10.6	9.1	9.5	9.5	9.8	10.2
8H 4H	9.5	9.9	9.9	10.2	10.6	9.2	9.6	9.5	9.9	10.3
6H	9.4	9.8	9.9	10.1	10.6	9.1	9.4	9.5	9.8	10.2
8H	9.4	9.7	9.8	10.1	10.5	9.0	9.3	9.5	9.7	10.2
12H	9.3	9.6	9.8	10.0	10.5	9.0	9.2	9.4	9.7	10.1
12H 4H	9.4	9.8	9.8	10.2	10.6	9.1	9.5	9.5	9.8	10.2
6H	9.4	9.7	9.8	10.1	10.5	9.0	9.3	9.5	9.7	10.2
8H	9.3	9.6	9.8	10.0	10.5	9.0	9.2	9.4	9.7	10.1
Variations with the observer position at spacings(CIE Pub.117):										
S = 1.0H	+ 2.1 / - 4.0					+ 2.2 / - 5.0				
1.5H	+ 2.5 / - 2.5					+ 2.5 / - 3.2				
2.0H	+ 3.8 / - 6.4					+ 4.2 / - 6.9				

CIE Pub.117, 1494 lm Total Lamp Luminous Flux Correct (8log(F/F0) = 1.4)
Area: 0.0063585 m2

C Range: 0 - 360DEG
C Interval: 30.0DEG
Test Speed: HIGH
Temperature:25.3℃
Operators:zoe
Test Date:2023-7-12

Range: 0 - 180DEG
Interval: 1.0DEG
Test System:EVERFINE GO-SPEX500_V1 SYSTEM V2.00.461
Humidity:65.0%
Test Distance:3.160m [K=1.0000]
Remarks: LAMP:BXRV-DR-1830G-1000-K-23 Ra:90
LENS: PM-1096 15R
DRIVER: PUP20A-1WMC 450mA
30minutes warm-up

UTILIZATION FACTORS TABLE

Test:U:120.06V I:0.1455A P:17.367W PF:0.9932 Freq:59.98Hz Lamp Flux:1493.63x1 lm		
NAME: 2118.192-LEA-15-DW	TYPE:	WEIGHT:
SPEC.: 3000K	DIM.:	SERIAL No.: 2307120891
MFR.: RISE	SUR.: 0.0063585m2	Shielding Angle:

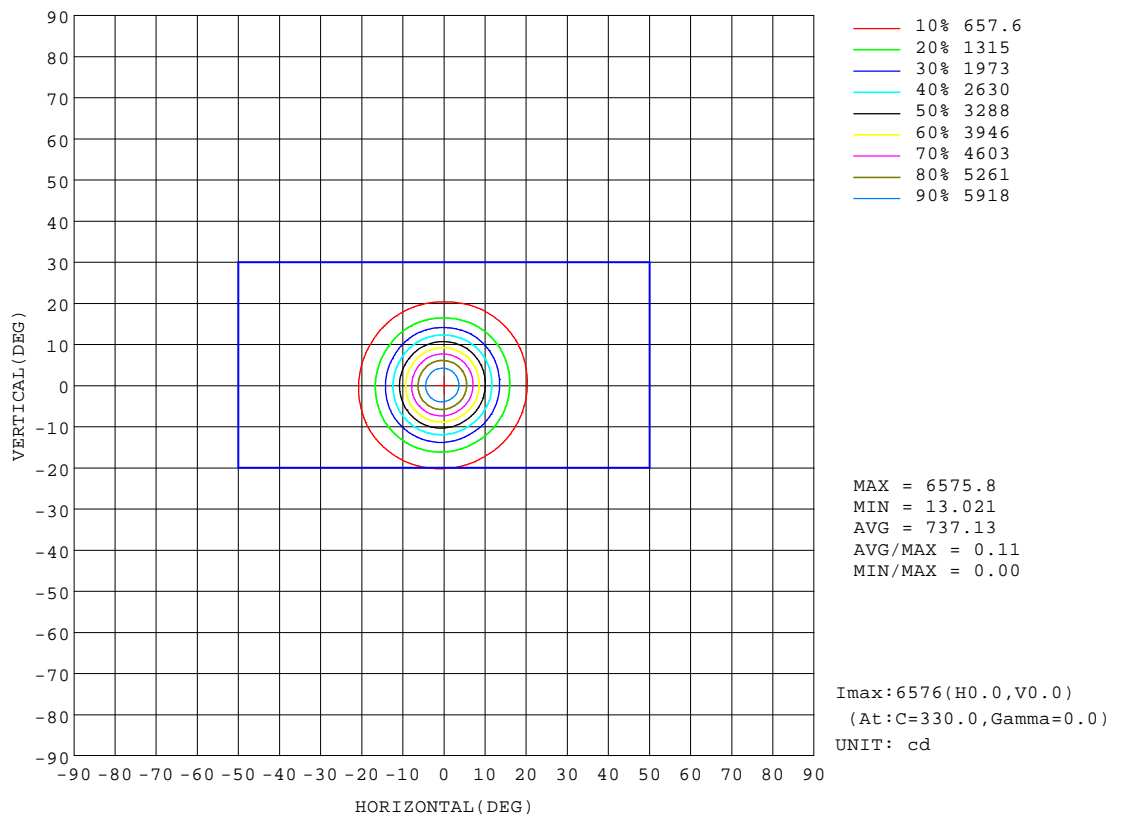
REFLECTANCE										
Ceiling	0.8	0.8	0.8	0.7	0.7	0.7	0.5	0.5	0.5	0
Walls	0.7	0.5	0.3	0.7	0.5	0.3	0.7	0.5	0.3	0
Working plane	0.2	0.2	0.2	0.2	0.2	0.2	0.2	0.2	0.2	0
ROOM INDEX	UTILIZATION FACTORS(PERCENT) $k(RI) \times RCR = 5$									
k = 0.60	72	67	64	72	67	64	71	67	64	61
0.80	78	73	71	77	73	70	76	73	70	67
1.00	81	77	74	81	77	74	79	76	74	71
1.25	84	80	78	84	80	77	82	79	77	74
1.50	86	83	80	85	82	80	84	81	79	76
2.00	88	85	83	87	84	82	85	83	81	77
2.50	90	87	84	88	86	84	86	84	82	78
3.00	91	88	86	89	87	85	87	85	83	78
4.00	92	90	89	91	89	87	88	86	85	80
5.00	93	92	90	92	90	89	89	87	86	80
ROOM INDEX	UF(total)									Direct
According to DIN EN 13032-2 2004			Suspended					SHRNOM = 1.25		

C Range: 0 - 360DEG
C Interval: 30.0DEG
Test Speed: HIGH
Temperature:25.3℃
Operators:zoe
Test Date:2023-7-12

Range: 0 - 180DEG
Interval: 1.0DEG
Test System:EVERFINE GO-SPEX500_V1 SYSTEM V2.00.461
Humidity:65.0%
Test Distance:3.160m [K=1.0000]
Remarks: LAMP:BXRV-DR-1830G-1000-K-23 Ra:90
LENS: PM-1096 15R
DRIVER: PUP20A-1WMC 450mA
30minutes warm-up

ISOCANDELA DIAGRAM

Test:U:120.06V I:0.1455A P:17.367W PF:0.9932 Freq:59.98Hz Lamp Flux:1493.63x1 lm		
NAME: 2118.192-LEA-15-DW	TYPE:	WEIGHT:
SPEC.: 3000K	DIM.:	SERIAL No.: 2307120891
MFR.: RISE	SUR.: 0.0063585m2	Shielding Angle:

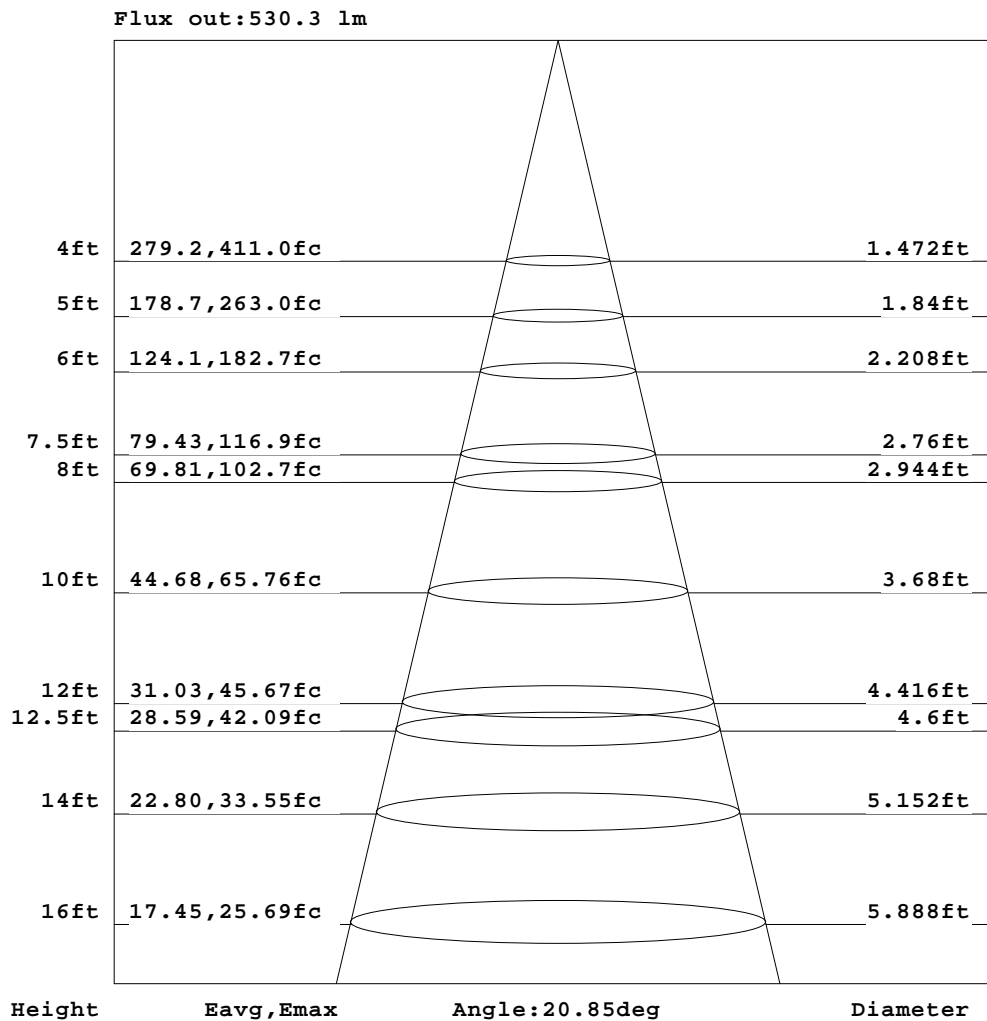


C Range: 0 - 360DEG
C Interval: 30.0DEG
Test Speed: HIGH
Temperature:25.3℃
Operators:zoe
Test Date:2023-7-12

Range: 0 - 180DEG
Interval: 1.0DEG
Test System:EVERFINE GO-SPEX500_V1 SYSTEM V2.00.461
Humidity:65.0%
Test Distance:3.160m [K=1.0000]
Remarks: LAMP:BXRV-DR-1830G-1000-K-23 Ra:90
LENS: PM-1096 15R
DRIVER: PUP20A-1WMC 450mA
30minutes warm-up

AAI Figure

Test:U:120.06V I:0.1455A P:17.367W PF:0.9932 Freq:59.98Hz Lamp Flux:1493.63x1 lm		
NAME: 2118.192-LEA-15-DW	TYPE:	WEIGHT:
SPEC.: 3000K	DIM.:	SERIAL No.: 2307120891
MFR.: RISE	SUR.: 0.0063585m2	Shielding Angle:



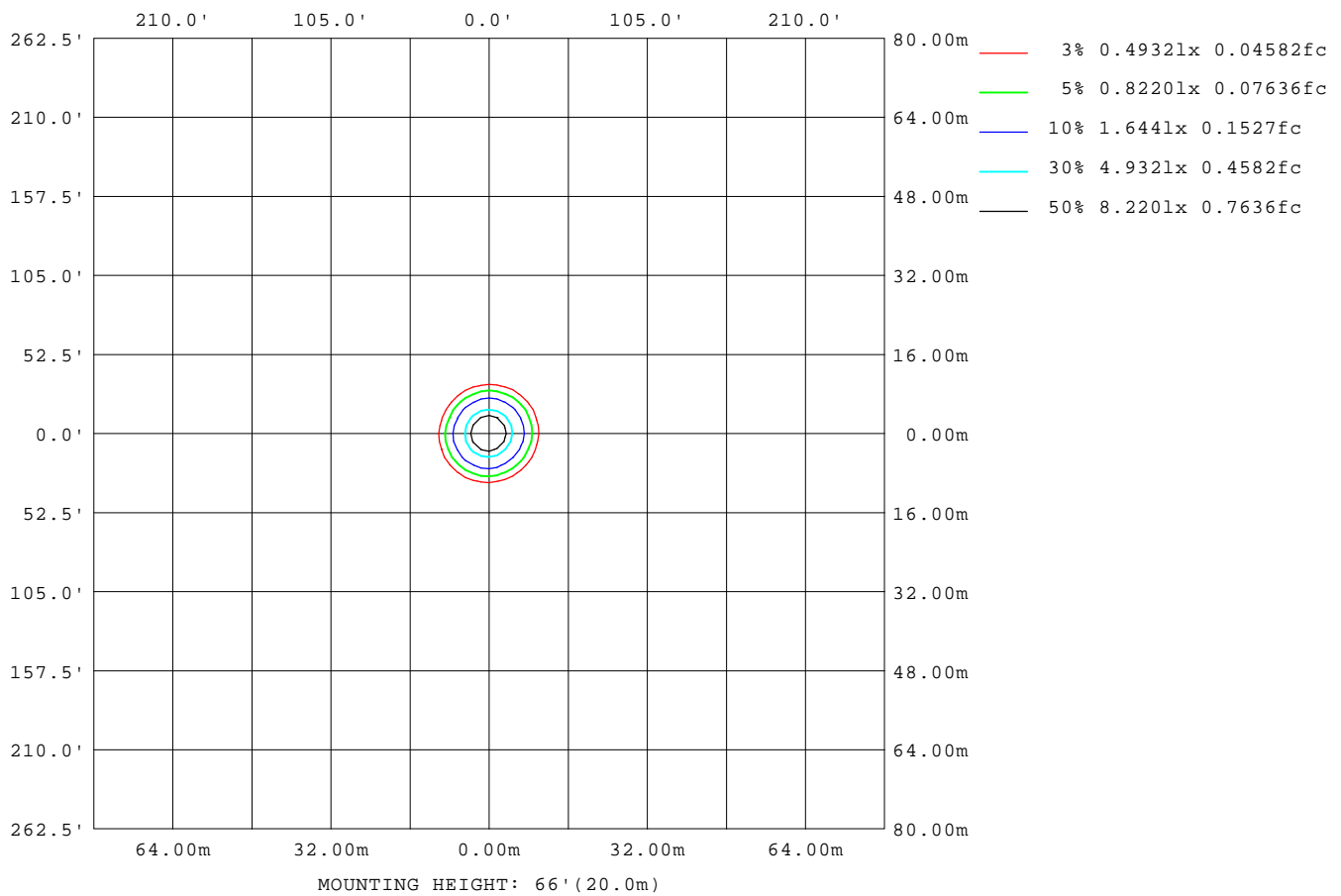
Note: The Curves indicate the illuminated area and the average illumination when the luminaire is at different distance.

C Range: 0 - 360DEG
C Interval: 30.0DEG
Test Speed: HIGH
Temperature: 25.3°C
Operators: zoe
Test Date: 2023-7-12

Range: 0 - 180DEG
Interval: 1.0DEG
Test System: EVERFINE GO-SPEX500_V1 SYSTEM V2.00.461
Humidity: 65.0%
Test Distance: 3.160m [K=1.0000]
Remarks: LAMP: BXRV-DR-1830G-1000-K-23 Ra: 90
LENS: PM-1096 15R
DRIVER: PUP20A-1WMC 450mA
30minutes warm-up

ISOLUX DIAGRAM

Test:U:120.06V I:0.1455A P:17.367W PF:0.9932 Freq:59.98Hz Lamp Flux:1493.63x1 lm		
NAME: 2118.192-LEA-15-DW	TYPE:	WEIGHT:
SPEC.: 3000K	DIM.:	SERIAL No.: 2307120891
MFR.: RISE	SUR.: 0.0063585m2	Shielding Angle:



C Range: 0 - 360DEG
C Interval: 30.0DEG
Test Speed: HIGH
Temperature:25.3℃
Operators:zoe
Test Date:2023-7-12

Range: 0 - 180DEG
Interval: 1.0DEG
Test System:EVERFINE GO-SPEX500_V1 SYSTEM V2.00.461
Humidity:65.0%
Test Distance:3.160m [K=1.0000]
Remarks: LAMP:BXRV-DR-1830G-1000-K-23 Ra:90
LENS: PM-1096 15R
DRIVER: PUP20A-1WMC 450mA
30minutes warm-up

LED Avg.L Report

Test:U:120.06V I:0.1455A P:17.367W PF:0.9932 Freq:59.98Hz Lamp Flux:1493.63x1 lm		
NAME: 2118.192-LEA-15-DW	TYPE:	WEIGHT:
SPEC.: 3000K	DIM.:	SERIAL No.: 2307120891
MFR.: RISE	SUR.: 0.0063585m2	Shielding Angle:

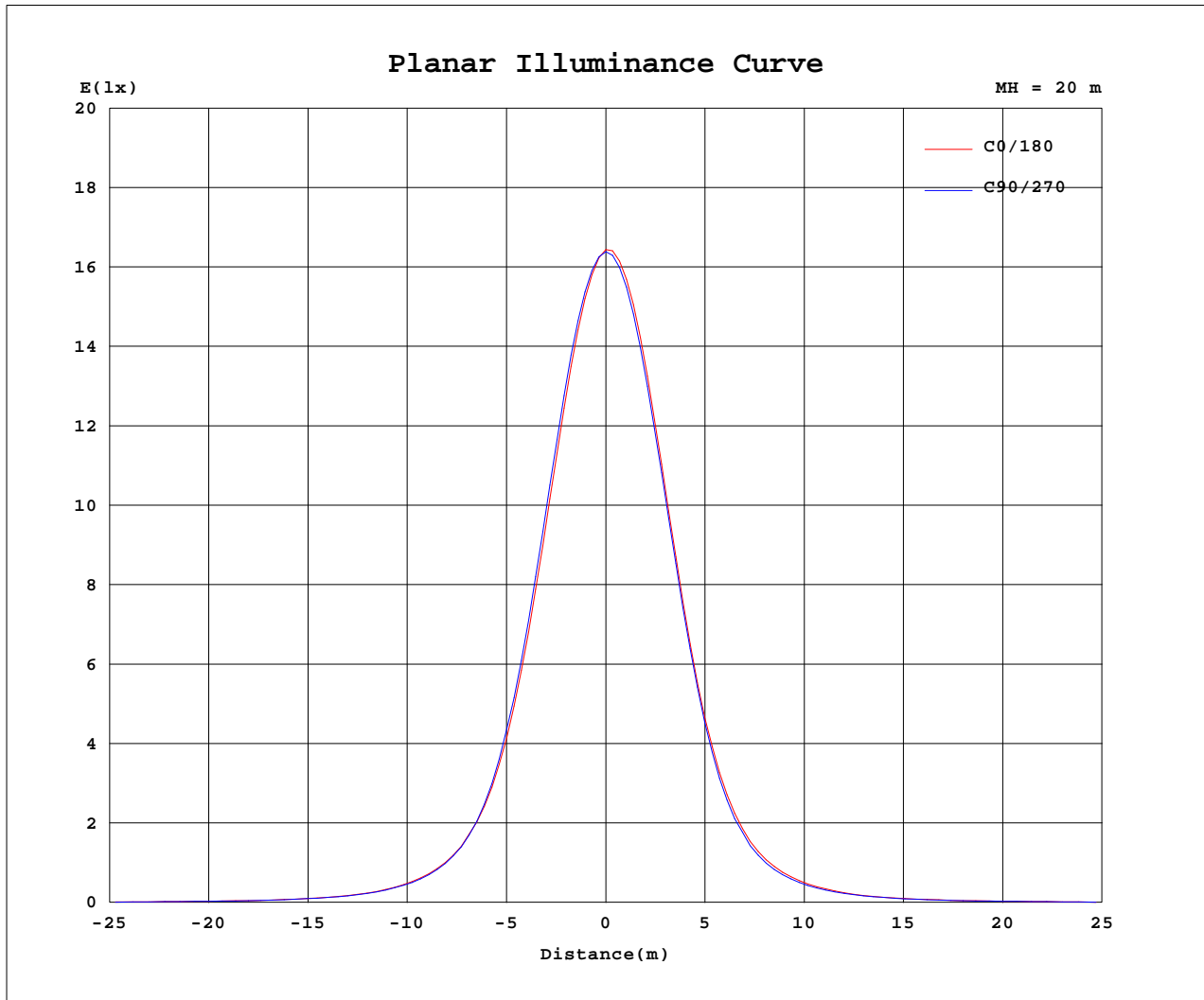
AvgL	cd/m2
L_0~180(65)av	1119
L_0~180(75)av	714
L_0~180(85)av	529
L_90~270(65)av	888
L_90~270(75)av	574
L_90~270(85)av	210
L_45(65)av	1042
L_45(75)av	637
L_45(85)av	287

Standard: GB/T 29293-2012

C Range: 0 - 360DEG
C Interval: 30.0DEG
Test Speed: HIGH
Temperature:25.3℃
Operators:zoe
Test Date:2023-7-12

Range: 0 - 180DEG
Interval: 1.0DEG
Test System:EVERFINE GO-SPEX500_V1 SYSTEM V2.00.461
Humidity:65.0%
Test Distance:3.160m [K=1.0000]
Remarks: LAMP:BXRV-DR-1830G-1000-K-23 Ra:90
LENS: PM-1096 15R
DRIVER: PUP20A-1WMC 450mA
30minutes warm-up

Planar Illuminance Curve



C Range: 0 - 360DEG
 C Interval: 30.0DEG
 Test Speed: HIGH
 Temperature: 25.3 °C
 Operators: zoe
 Test Date: 2023-7-12

Range: 0 - 180DEG
 Interval: 1.0DEG
 Test System: EVERFINE GO-SPEX500_V1 SYSTEM V2.00.461
 Humidity: 65.0%
 Test Distance: 3.160m [K=1.0000]
 Remarks: LAMP: BXRV-DR-1830G-1000-K-23 Ra: 90
 LENS: PM-1096 15R
 DRIVER: PUP20A-1WMC 450mA
 30minutes warm-up

LUMINOUS DISTRIBUTION INTENSITY DATA

Test:U:120.06V I:0.1455A P:17.367W PF:0.9932 Freq:59.98Hz Lamp Flux:1493.63x1 lm		
NAME: 2118.192-LEA-15-DW	TYPE:	WEIGHT:
SPEC.: 3000K	DIM.:	SERIAL No.: 2307120891
MFR.: RISE	SUR.: 0.0063585m2	Shielding Angle:

Table--1

UNIT: cd

C(DEG) (DEG)	0	30	60	90	120	150	180	210	240	270	300	330						
0	6564	6564	6564	6564	6564	6564	6564	6564	6564	6564	6564	6564						
5	5451	5455	5473	5581	5685	5743	5745	5714	5730	5660	5590	5505						
10	3296	3259	3278	3441	3574	3648	3642	3591	3620	3580	3521	3403						
15	1546	1509	1494	1609	1713	1789	1742	1682	1716	1683	1682	1619						
20	683	649	637	680	734	771	743	699	703	694	716	714						
25	333	315	308	323	343	362	350	325	325	322	336	343						
30	173	165	161	168	175	185	179	168	169	167	173	177						
35	97.4	94.2	92.3	95.3	97.5	102	98.8	95.2	96.8	94.8	96.7	98.8						
40	60.8	59.3	58.2	59.2	60.4	62.2	61.1	59.5	59.9	59.1	60.1	61.3						
45	41.0	40.1	39.5	39.8	40.4	41.2	40.4	39.6	39.8	39.5	40.3	41.1						
50	27.5	27.2	25.3	24.9	26.1	27.6	26.9	26.1	25.5	24.8	26.4	27.3						
55	15.9	15.6	13.8	13.4	14.6	16.2	15.7	15.3	13.9	13.1	14.8	15.9						
60	6.09	6.05	4.66	4.47	4.91	6.43	6.18	6.05	4.67	4.36	4.86	5.96						
65	3.00	2.97	2.57	2.36	2.70	3.06	3.01	2.94	2.59	2.41	2.59	2.91						
70	1.62	1.59	1.40	1.38	1.42	1.65	1.64	1.60	1.39	1.38	1.39	1.55						
75	1.17	1.10	0.99	0.94	1.02	1.12	1.18	1.09	1.01	0.95	0.99	1.08						
80	0.71	0.62	0.50	0.48	0.53	0.65	0.75	0.63	0.53	0.49	0.51	0.61						
85	0.27	0.19	0.12	0.12	0.13	0.23	0.32	0.21	0.13	0.11	0.12	0.19						
90	0.00	0.00	0.00	0.00	0.00	0.00	0.00	0.00	0.00	0.00	0.00	0.00						
95	0.00	0.00	0.00	0.00	0.00	0.00	0.00	0.00	0.00	0.00	0.00	0.00						
100	0.00	0.00	0.00	0.00	0.00	0.00	0.00	0.00	0.00	0.00	0.00	0.00						
105	0.00	0.00	0.00	0.00	0.00	0.00	0.00	0.00	0.00	0.00	0.00	0.00						
110	0.00	0.00	0.00	0.00	0.00	0.00	0.00	0.00	0.00	0.00	0.00	0.00						
115	0.00	0.00	0.00	0.00	0.00	0.00	0.00	0.00	0.00	0.00	0.00	0.00						
120	0.00	0.00	0.00	0.00	0.00	0.00	0.00	0.00	0.00	0.00	0.00	0.00						
125	0.00	0.00	0.00	0.00	0.00	0.00	0.00	0.00	0.00	0.00	0.00	0.00						
130	0.00	0.00	0.00	0.00	0.00	0.00	0.00	0.00	0.00	0.00	0.00	0.00						
135	0.00	0.00	0.00	0.00	0.00	0.00	0.00	0.00	0.00	0.00	0.00	0.00						
140	0.00	0.00	0.00	0.00	0.00	0.00	0.00	0.00	0.00	0.00	0.00	0.00						
145	0.00	0.00	0.00	0.00	0.00	0.00	0.00	0.00	0.00	0.00	0.00	0.00						
150	0.00	0.00	0.00	0.00	0.00	0.00	0.00	0.00	0.00	0.00	0.00	0.00						
155	0.00	0.00	0.00	0.00	0.00	0.00	0.00	0.00	0.00	0.00	0.00	0.00						
160	0.00	0.00	0.00	0.00	0.00	0.00	0.00	0.00	0.00	0.00	0.00	0.00						
165	0.00	0.00	0.00	0.00	0.00	0.00	0.00	0.00	0.00	0.00	0.00	0.00						
170	0.00	0.00	0.00	0.00	0.00	0.00	0.00	0.00	0.00	0.00	0.00	0.00						
175	0.00	0.00	0.00	0.00	0.00	0.00	0.00	0.00	0.00	0.00	0.00	0.00						
180	0.00	0.00	0.00	0.00	0.00	0.00	0.00	0.00	0.00	0.00	0.00	0.00						

C Range: 0 - 360DEG
C Interval: 30.0DEG
Test Speed: HIGH
Temperature:25.3℃
Operators:zoe
Test Date:2023-7-12

Range: 0 - 180DEG
Interval: 1.0DEG
Test System:EVERFINE GO-SPEX500_V1 SYSTEM V2.00.461
Humidity:65.0%
Test Distance:3.160m [K=1.0000]
Remarks: LAMP:BXRV-DR-1830G-1000-K-23 Ra:90
LENS: PM-1096 15R
DRIVER: PUP20A-1WMC 450mA
30minutes warm-up